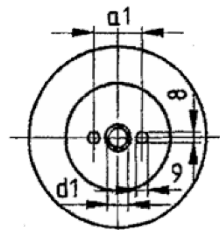
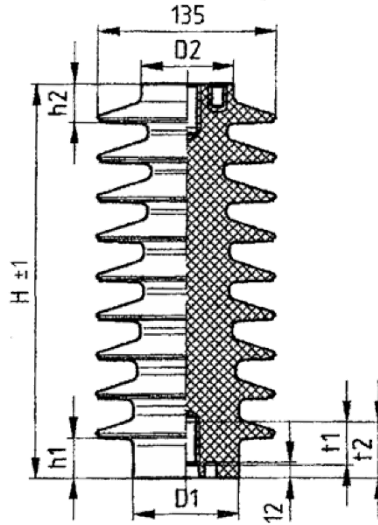


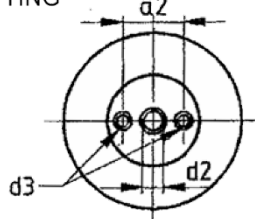
Product / Article			
Type	Design 1	Design 2	
CO4-170	B402	B403	
CO8-170	B404	B405	



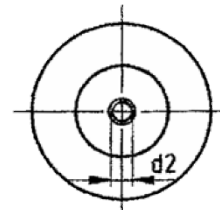
Bottom fitting



TOP FITTING



Design 1



Design 2

Mechanical values									Colour : RAL 8016			
CO4-170	300	31	29	80	70	M16x33	M16x33	M6x12	37	36	33	43
CO8-170	300	31	29	80	70	M24x35	M24x35	M10x16		46	35	45
dimensions	H	H1	H2	D1	D2	D1xt	D2xt	D3xt	a1	a2	t1	t2

Tests corresponding IEC 60660 (VDE 0441/part 3) – VDE 0446/part1									
CO4-170	FSH4-170	H4-170	170 kV	70 kV	> 4 kN	784 mm	9	4,05 kg	
CO8-170	FSH8-170	H8-170	170 kV	70 kV	> 8 kN	784 mm	9	4,05 kg	
Type	draw	Designation corresponding IEC 60273	Lightning impulse withstand voltage	Power frequency withstand voltage, wet	Failing load bending	Creepage distance	Numbers of ribs	Weight	

Index	Modification / Complement	Date	Name	Appr	Index	Modification / Complement	Date	Name	Appr
a	Product nr	13.10.04	JB		d				
b	-				e				
c	Report and tolerance supplemented	26.01.05			f				

	Date	Name	Customer	Article	Drawing N° : FSH36		
Prepared	210995	JB	BINAME	-			
Approved	18.7.04		Material : Cyclo				
Scale : 1:1	Type :						
General tolerances DIN 16901 130	Casting cycloaliphatic resin outdoor post insulator Nominal Use Voltage 36 kV						
					BINAME INSULATORS Robert Dansaertlaan 250 1702 Groot-Bijgaarden Belgium		