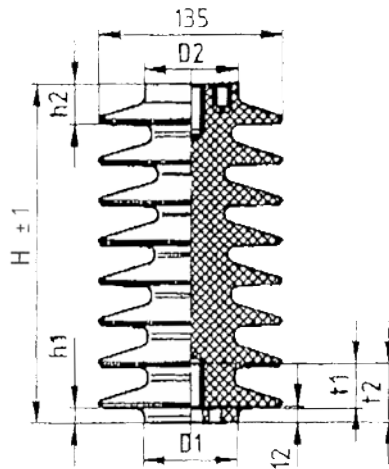
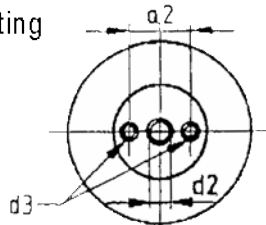


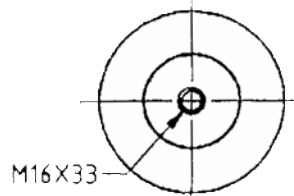
Bottom fitting



Top fitting



Design 1



Design 2

Product / Article			
Type	Design 1	Design 2	
CO4-125/1	B276	B277	
CO8-125/1	B282	B283	

Mechanical values										Colour : RAL 8016			
CO4-125/1	250	11	29	70	70	M16x33	M10x20	M6x12	37	36	33	43	
CO8-125/1	250	11	29	70	90	M20x34	M16x33	M10x16		66	34	44	
Type	H	h1	h2	D1	D2	d1xt	d2xt	d3xt	a1	a2	t1	t2	
Dimensions (in mm)													

Tests corresponding IEC 60660 (VDE 0441/part 3) – VDE 0446/part1									
CO4-125				125 kV	50 kV	> 4 kN	734 mm	8	3,35 kg
CO8-125				125 kV	50 kV	> 8 kN	724 mm	8	3,50 kg
Type		Designation corresponding IEC 60273	Lightning impulse withstand voltage	Power frequency withstand voltage, wet	Failing load bending	Creepage distance	Numbers of ribs	Weight	

Index	Modification / Complement	Date	Name	Appr	Index	Modification / Complement	Date	Name	Appr
a	Product nr	13.10.04	JB		d				
b	-				e				
c	Report and tolerance supplemented	26.01.05			f				

Date	Name	Customer	Article	Drawing N° : FSG24/1
Prepared 210995	JB	BINAME	-	
Approved 18.7.04		Material : Cyclo		
Scale : 1:1	Type :			BINAME INSULATORS Robert Dansaertlaan 250 1702 Groot-Bijgaarden Belgium
General tolerances DIN 16901 130	Casting cycloaliphatic resin outdoor post insulator Nominal Use Voltage 24 kV – H250 mm			