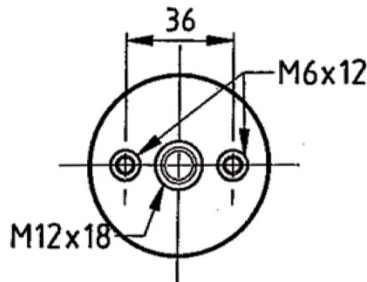
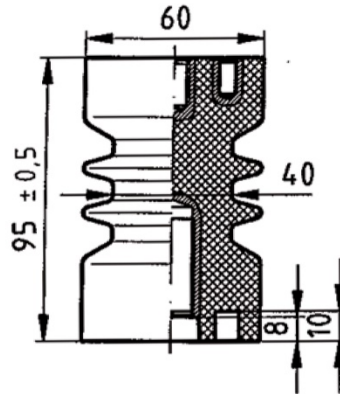
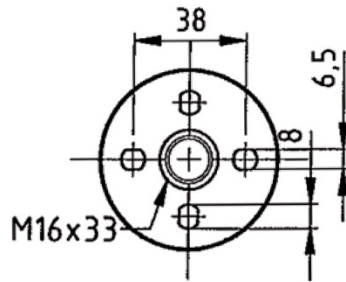


ⓐ Tolerances: 130/DIN 16901

Bottom fitting



Design 1/1 with potential connection
IEC 273

Tests corresponding IEC 60660 (VDE 0441/part 3)

Color = RAL 8016

Type	A 10S-500	JO6-60	60 kV	28 kV	> 5 kN	133 mm	2	0,45 kg
	Designation corresponding DIN 48136	Designation corresponding IEC 60273	Lightning impulse withstand voltage	Power frequency withstand voltage, dry	Failing load bending	Creepage distance	Numbers of ribs	Weight

Index	Modification / Complement	Date	Name	Appr	Index	Modification / Complement	Date	Name	Appr
a	Report BVFA and tolerances supplemented	19.01.05	JB		d				
b			JB		e				
c					f				

Date	Name	Customer	Article	Drawing N° : M0020-1
Prepared 19.09.95	JB	BINAME	B645	
Approved 18.7.06		Material : Epoxy		
Scale	Type : Casting epoxy resin indoor post insulator			BINAME INSULATORS Robert Dansaertlaan 250 1702 Groot-Bijgaarden Belgium
General tolerances DIN 16901 130	JO6-60 B645			