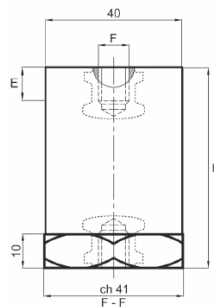


Data Sheet CT/P 35



| | |
|---------------------------------|---|
| Material | Polyester material reinforced with fiberglass BMC RF 3/20 |
| Operating Temperature | °C: - 40° + 130° |
| Fire reaction | UL94-V0 File Nr. E205214 |
| | HL2 according to the EN45545-2 |
| Thread Material | Galvanized Steel |
| H | 35 mm |
| E | M8 and M 10 : 10 mm |
| Tightening Torque | M8 : 22 Nm / M 10 : 26 Nm |
| Operating Voltage | 750 V |
| A.C. surface flashover voltage | 8 KV |
| A.C. internal flashover voltage | 20 KV |
| Tensile stress | 1000 DN |
| Cantilever stress | 750 DN |
| Compressive stress | 8.000 DN |
| Twisting stress | 3-6 DN x mm |
| Package | 36 pcs |
| Weight of package | 4,10 kgs |